

A SIMPLIFIED METHOD FOR DYNAMIC RESPONSE ANALYSIS OF SOIL-PILE-BUILDING INTERACTION SYSTEM IN LARGE STRAIN LEVELS OF SOILS

Shin'ichiro TAMORI

Shinshu University, Nagano, Japan, snowman@gipwc.shinshu-u.ac.jp

Masanori IIBA

Building Research Institute, Min. of Land, Infrastructure and Transport, Tsukuba, Japan

Yoshikazu KITAGAWA

Keio University, Yokohama, Japan

ABSTRACT

A series of shaking-table tests of a scaled soil-pile-building model were performed in order to study the effects of the plastic deformation of soil on dynamic characteristics of the soil-pile-building interaction system. The elasto-plastic material for model ground was made by Plasticine, whose strain dependency of the stiffness and the damping are similar to those of clayey soils. The input motion is 1968 Hachinohe EW and its maximum accelerations were set to be 100, 300 600 cm/s^2 at the shaking table. Results show the average value of maximum soil strain became from 0.0018 to 0.018 and the natural frequency and the amplification factor decrease by 28% and 39%, respectively. Dynamic response analyses, which combined the mass-spring model (SR model) having swaying and rocking spring and dashpots located at the foundation of the building and an equivalent linearization method, were carried out. The difference in the natural frequency obtained by the test and analyses were within 5% and those of maximum acceleration at the building are within 10%.

KEYWORDS: Soil-pile interaction, Sway-Rocking model, soil non-linearity, equivalent linearization method

1. INTRODUCTION

When designing a building, it is important to evaluate earthquake performance of a building including non-linear soil-building interaction effects during an earthquake. FEM models or Penzien's models are efficient to do dynamic response analyses for a soil-pile-building interaction system including non-linear soil effects. For FEM models, large calculation time and high computational performance is needed and for Penzien's models, there are uncertainties in evaluating of virtual mass around the piles or ground springs. So, those methods are not common in practical designing processes. In the practical designing of a building, analytical methods should be simple so that, for example, an equivalent linearization method, like SHAKE, have been used frequently to calculate ground responses. But, in the case of the non-linear soil-building interaction system, the accuracy of the method had not been tested enough. There were several researches using the thin layer element method for having reduced the rigidity of ground around the foundation or piles. That method was applied for analyses of calculating dynamic impedance of a foundation (Miura 1995), or vibration tests of piles (Kusakabe 1994). In the case of vibration tests analysis, an equivalent method was employed, but that was not applied for earthquake response analyses.

In this study, a series of shaking table tests were done in order to evaluate the effect of plastic deformation of soils on dynamic characteristics of soil-pile-building interaction system. Dynamic response analyses, which combined Sway-Rocking model and an equivalent linearization method, of the tests were done. Static FEM analyses were also done to estimate effects of soil's non-linearity around piles, and these results were used in the dynamic analyses.

2. PLASTIC MATERIAL FOR GROUND MODEL

Plastic material for the artificial ground model used in this study was made of Plasticine and oil. Plasticine,

being a mixture of calcium-carbonate and oil, has been used as a model material for plastic deformation processing of steel, since it has restoring force curves similar to high- temperature steel. Fig. 1 shows the soil characteristics, strain-shear modulus and strain-damping factor relationships for actual clayey soils and Plasticine, which is the plastic soil material used in this shaking table tests. The initial shear modulus, G_t (strain being 1.0×10^{-5}), shear modulus at large strain levels, G_s , and damping factors, h_g , were obtained by tri-axial compression tests in which ambient stress were kept at 1.0 kg/cm^2 and exciting frequency was 1.0Hz . The shear modulus and damping factor of the plastic soil material, Plasticine, has strain dependency similar to those of actual clayey soils.

3. OUTLINE OF SHAKING TABLE TESTS

The similarity that proposed by Buckingham was used in modeling the building and the ground soils. The scale factors calculated from this formula are summarized in Table 1. This similarity is applicable to non-linear soil dynamics when the soil model material has a shear modulus-strain and a damping factor-strain relation similar to that of the prototype (Kagawa 1987). Under these conditions the ratio of shear forces in the model and the prototype were kept approximately equal to that of the damping forces for wide strain levels of soil.

Fig. 2 shows an outline of the building and the ground model together with the location of the measurement apparatus. Two dwelling units of 11-story buildings were modeled in the transverse direction. Table 2 shows the natural frequency and damping factor of the building model. The building model was made of steel weight and its columns were made of steel plates. The building foundation was made of aluminum and acryl plates. Four pillar-shaped(38mm, length is 487mm) pile models were made of steel plate attached with rubber, they were set at the corners of the foundation. The ground model has a block shape and its size is $2 \times 1.46 \times 0.6\text{m}$. Stainless plates were set at both side ends in transverse direction of the ground to prevent vertical motion of the ground. The central part(800mm, depth is 387mm) of the ground model was made from Plasticine and oil. The remaining portions of the model were composed of polyacrylamid and bentnite, and remained elastic throughout the tests. Table 3 shows characteristics of the ground. Damping factors were obtained by a free torsional vibration test and shear wave velocity was obtained by the P-S wave propagation tests.

An earthquake records in which the time length was corrected according to the similarity were used for the input ground motion: 1968 Hachinohe EW. Its maximum accelerations were set as 100, 300 and 600 cm/s^2 on the shaking table.

4. RESULTS OF THE TESTS

Fig. 3 shows the first natural frequencies derived by spectral ratios (BH6/SH5), and average value of maximum soil shear strains. The average value of maximum shear strains shown in Fig. 3 and 4 are calculated as follows: (1) The displacement at SH5, SH4, SH3 and SH2 was calculated after the acceleration records at four points were integrated twice. (2) Maximum relative displacements divided by those distances, and they become maximum strains. (3) The average value of maximum shear strains were average value of the maximum strains between SH5 and SH4, SH4 and SH3, and SH3 and SH2. Fig. 3 shows the average values of maximum strains were about from 0.0018 to 0.018, and the first natural frequencies were from 8.25Hz to 6.0Hz. Fig. 4 shows the amplification factors, those are amplitude of the spectral ratios (BH6/SH5) at the natural frequency, and the average value of maximum strains. The amplification factors are about from 7.1 to 4.3. So, the natural frequency and the amplification factors, when the maximum input motions acceleration was 600 cm/s^2 , become 72% and 61% of those when it was 300 cm/s^2 .

5. THEORETICAL MODEL

5.1 Outline

The theoretical model employed in this study was the Sway-Rocking (SR) model, and an equivalent linearization method was used for non-linear analyses. Dynamic stiffness of the pile foundation were calculated as follows:

(a) Dynamic stiffness of piles for horizontal and rocking motion proposed by Novak and Nogami (Novak and Nogami 1977) were employed. Group effects factor, which was 0.72 in this case, were derived by Iiba's method (Inoue et. al. 1988).

(b) Dynamic stiffness of piles for vertical motion was calculated by Novak's method (Novak 1977).

5.2 Soil Ground

Shear modulus, G_s , and damping factor, h_g , of the soil were determined by the tri-axial compression tests according to the following equation modified by the Hardin-Drnevich model (Hardin and Drnevich 1972):

$$\frac{G_s}{G_t} = \frac{1.01}{1 + 0.96 (r_s / 0.002072)^{1.258}} \quad (1)$$

$$h_g = 0.035 + 0.145(1 - G_s / G_t) \quad (2)$$

Where G_t is the initial shear modulus and r_s is shear strain of the soil.

5.3 Soil Non-Linearity around Pile

Effects on soil non-linearity around piles were evaluated by a static FEM analysis. Fig.5 shows a FEM model, which was 1/2 symmetry model, for the static analysis, and its radius was 50cm, depth was 51cm and pile length was 47cm. The lower layer of the ground layer was elastic media and the upper layer elasto-plastic media, which follow the Drucker-Prager's yield function. Its cohesion was 0.02kgf/cm² and angle for internal friction was 0°. Boundary conditions for the analyses are follows: (a) Bottom and circumference part of the ground was fix. (b) Pile cap had freedom degree in only horizontal direction, so pile cap's rotation was inhibited. (c) Horizontal force was applied at the pile cap.

Fig. 6 shows horizontal stiffness coefficient obtained by the static FEM analysis. k_{h0} is initial horizontal coefficient of subsoil reaction and k_{hs} are those at some strain. k_{hs} was calculated by equation (3).

$$P = 4 EI \left(\sqrt[4]{\frac{k_{hs} D}{4 EI}} \right)^3 y \quad (3)$$

where, P : applied force, EI : bending stiffness of pile, D : pile diameter, y : pile displacement

Fig.7 is also results of the same static FEM analyses in the case for the prototype. In Fig.7, the well-known relation of k_h and displacement are also plotted. Those two curves are very close when displacements are from 0.5 cm to 4cm. From the results of the static FEM analyses, we got following relation.

$$\frac{k_{hs}}{k_{h0}} = \frac{1 - 0.03741}{1 + (\delta_p / 0.05108)^{1.4856}} + 0.03741 \quad (4)$$

where k_{h0} : initial horizontal coefficient of subsoil reaction, k_{hs} : horizontal coefficient of subsoil reaction when pile cap displacement is δ_p

5.4 Estimation of soil's strain

Effects on soil non-linearity were evaluated according to soil's strain. In case of earthquake response of soil-building interaction system, we have to consider soil strain by free filed motion of the ground, γ_{wave} in equation (5), and that by foundation displacement, γ_p in equation (5). In this study, former are measured value, which is the average value of maximum shear strain, shown in Figs. 3 and 4. Later were evaluated as follows: (a) we made response analyses of SR model at initial condition and got maximum relative displacement of pile foundation. (b) we calculated k_{h0}/k_{hs} factor by equation (4) from maximum relative displacement. (c) k_{hs} should be proportion to shear stiffness of soil, G_s , so we put k_{h0}/k_{hs} into the left term of equation (1), and calculated γ_s . (d) Equivalent strain of soil, γ_{eq} , was calculated by equation (5).

$$\gamma_{eq} = \alpha \sqrt{\gamma_{wave}^2 + \gamma_p^2} \quad (5)$$

where β : coefficient for considering nonstationarity of structural response.

The reason why u_{eq} is not a simple sum of u_{wave} and u_p is their maximum value didn't occur at the same time.

6. RESULTS OF ANALYSIS

Fig.8 shows (a) first natural frequency, (b) amplification factor at the first natural frequency, which were obtained from spectral ratios of BH6 by SH5, and (c) maximum acceleration at the top of the building where the coefficient β is 0.7. When the input motion's maximum accelerations were 100 and 300cm/s², the difference between tests and analyses in the natural frequency was within 4%, and those in the amplification factor and the maximum accelerations at the top the building were within 16 and 10%, receptivity. So we can say the analyses had enough accuracy in practical use. When the input motion's maximum acceleration was 600cm/s², the difference in the natural frequency was 11% so this difference brought 28% error in the maximum acceleration.

In order to investigate why the difference in tests and analyses was so large when the maximum input acceleration was 600cm/s², we research the nonstationarity in response of the building and phase difference between u_{wave} and u_p in equation (5).

At first, we evaluated the nonstationarity in response by equations (6) and (7).

$$\beta = \frac{\sqrt{\int_{T_1}^{T_2} u_b^2(t) dt}}{u_{b,max}} \quad (6)$$

$$E(T_3) = \int_0^{T_3} u_b^2(t) dt \quad (7)$$

where $u_b(t)$ is relative displacement of the base, $u_{b,max}$ is its maximum value. T1 and T2 are times when E(T1)/E(T) is 0.05 and E(T2)/E(T) is 0.95, respectively, where T is total time duration of input motion.

If the response was steady stationary process, β will be $1/\sqrt{2}$. Table 4 shows β in equation (6) and it shows that the larger the maximum acceleration of input motion, the stronger the nonstationarity. Fig. 9 shows u_{wave} and relative displacement of the base. As shown in these figures, the larger the maximum acceleration of input motion, the larger the phase different between u_{wave} and the relative displacement of the base. So, these two facts are reasons why the difference between the test and the analysis were large when the input motion's maximum acceleration was 600cm/s².

We have done more analyses, where the coefficient β was from 0.4 to 0.6. Fig.10 shows results of these analyses and the tests. Ratios of the analytical value and the tests value were from 0.92 to 1.01 in the natural frequency. In the amplification factor and the maximum accelerations, the ratios were form 1.01 to 1.07 and 0.07 to 0.94, respectively. Relation ships between the tests value and the analytical value in the first natural frequency and the maximum acceleration at the top of the building are better when β is 0.4. When β is 0.6, the difference between the test and analysis in the natural frequency is just 8%, but the difference in the maximum acceleration at the top of the building is 23%, so it is important to evaluate the first natural frequency accurately.

Only the result when β was 0.4 at 600cm/s² input test and 0.7 at 100cm/s² and 300cm/s² input tests were shown after this. Figs. 11 and 12 shows the maximum acceleration at the building and acceleration time history of the response at the top of the building. The analytical value and the tests value were close. Figs.15, 16 and 17 shows spectral ratios obtained by the tests and analyses. In these figures, BH6 is the top of the building, BH1 is the base of the building, SH5 is the ground surface, and UR is rocking motion at the top of the building and UH is relative deformation of the building. As shown in Fig.15 (b), amplitude of rocking motion was over estimated by the analysis, but in other cases, the analytical value and the test value were very close.

CONCLUSION

We proposed a simplified method for dynamic response analyses, which consisted of Sway-Rocking model and an equivalent linearization method. The accuracy of the method was examined by shaking table tests of elasto-plastic soil-pile-building interaction system.

Results of the analyses were as follows:

- (1) The average value of the maximum strain of soil ground became 0.0018 to 0.018, according to those changing of the soil condition, the natural frequency of the soil-pile-building system became from 8.25Hz to 6.0Hz and the amplification factor became from 7.1 to 4.3.
- (2) Ratios of the tests value and analytical value in the natural frequency, the amplification factor and the maximum acceleration at the top of the building were from 0.99 to 1.04, 0.84 to 1.09 and 0.94 to 1.10, respectively, so, the proposed method had enough accuracy for practical use in designing buildings. But, when the maximum input acceleration was 600cm/s^2 , the coefficients that considered nonstationarity of the soil and the building response should be smaller than those when the maximum input acceleration was 100 and 300 cm/s^2 . We pointed the reason why the coefficient should be changed were (a) the larger the amplitude of input motion, the larger the level of nonstationarity in relative displacement of the pile foundation, and (b) the larger the phase difference between strain by the free field motion and that by the pile foundation's displacement.

REFERENCE

- Hardin, B. O. and Drnevich, V. P.(1972). "Shear modulus and damping in soils, Design equation and curves", *Journal of Soil Mech. and Foundation, Div. ASCE*, 98(SM7), 667-692.
- Inoue, Y., Osawa, Y., Matushima, Y, Kitagawa, Y., Yamazaki, Y. and Kawamura, S. (1988). " A Proposal for Seismic Design Procedure of Apartment Houses Including Soil-Structure Interaction Effect ", *Proc. of Ninth World Conference on Earthquake Engineering*, Vol. 8, 365-370.
- Kagawa, T. (1987). "On the similitude in model vibration tests on earthquakes.", *Proc. of Japan Society of Civil Engineering*, 275, 69-77
- Kusakabe, K., Yasuda, T. and Maeda, Y. (1994). " Dynamic Characteristics of Soil-Pile Foundation System in Non-Linear Soil Medium", *Proceedings of The Ninth Japan Earthquake Engineering Symposium*, Vol.2, 1219-1224.
- Miura, K., Masuda, K., Maeda, T. and Kobori, T. (1995), " Nonlinear Dynamic Impedance of Pile Group Foundation", *Proc. 3rd Int. Conf. On Recent Advances in Geotechnical Earthquake Eng. and Soil Dynamics*, 417-422.
- Novak, M. and Nogami, T. (1977), " Soil-Pile Interaction in Horizontal Vibration, *Earthquake Engineering and Structural Dynamics*", Vol.5, 263-281.
- Novak, M. (1977), " Vertical Vibration of Floating Piles", *Proceedings of the American Society of Civil Engineers*, Vol.103, EM1, 153-168.

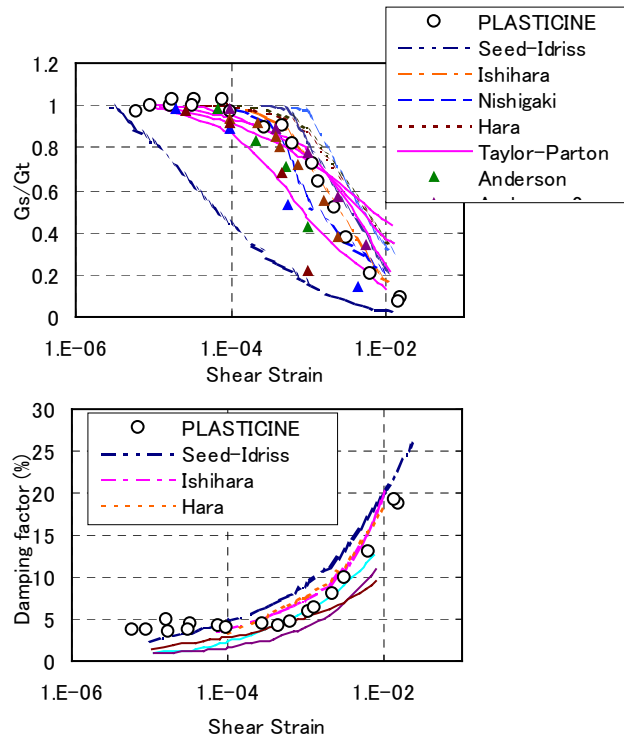


Fig. 1 Soil Characteristics

Table 1: Similitude Ratios

Item		Ratio (Model/Prototype)	
Soil Density	kgf/cm ³	$1/\eta$	1
Length	cm	$1/\lambda$	1/40
Acceleration	cm/s ²	1	1
Displacement	cm	$1/\lambda$	1/40
Mass	kgf.s ² /cm	$1/\eta \lambda^3$	$1/6.4 \times 10^4$
Shear Modulus	kgf/cm ²	$1/\eta \lambda$	1/40
Frequency	1/s	$\sqrt{\lambda}$	6.325
Velocity	cm/s	$1/\sqrt{\lambda}$	1/6.325
Stress	kgf/cm ²	$1/\eta \lambda$	1/40
Strain		1	1

Table 2: Characteristics of Building Model

Foundation		Building		Characteristics of Fixed Base Building	
Size (cm)	Weight (kgf)	Height (cm)	Weight (kgf)	Natural Freq. (Hz)	Damping Factor (%)
30 × 30	6.79	78.7	28.4	18.8	0.22

Table 4: Nonstationarity in relative displacement of foundation

Maximum input acc. (cm/s ²)	in equation (6)
100	0.378
300	0.267
600	0.216

Table 3: Characteristics of Ground Model

Item	Upper Layer (GL~GL-45cm)		Lower Layer (GL-45~60cm)
	Center	Edge	
Vs(m/s)	23.7	18.4	36.0
Damping Factor(%)	6.63*	5.57	6.05
Density(gf/cm ³)	1.57	1.17	1.41

*Strain level is 3.6×10^{-4}

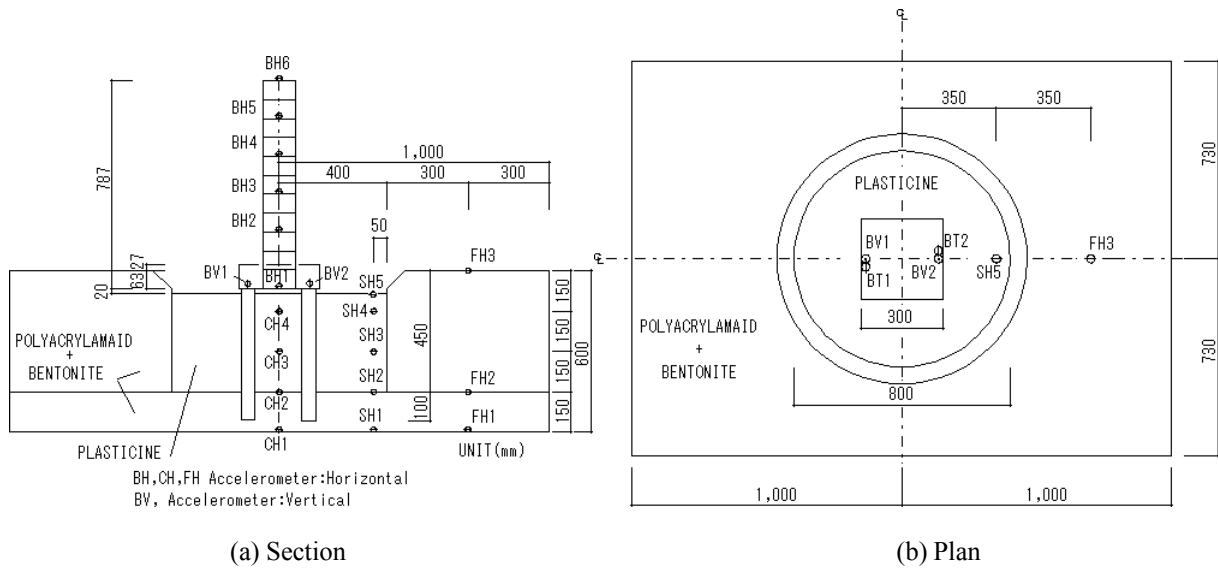


Fig. 2 Test model

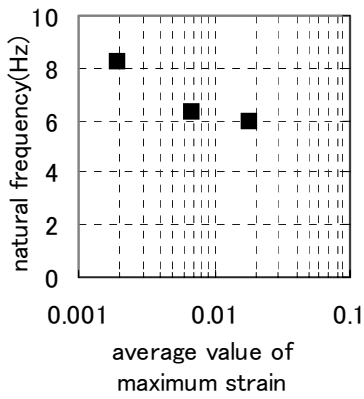


Fig.3 First natural frequency and average value of maximum soil strain

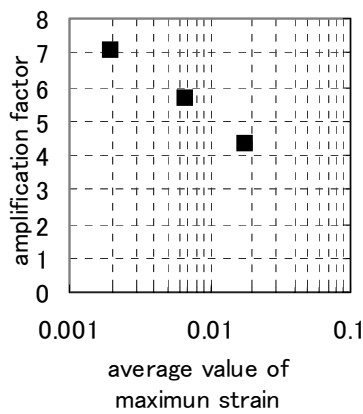


Fig.4 Amplification factor and average value of maximum soil strain

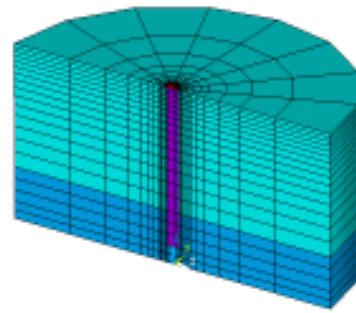


Fig.5 FEM model for static analysis

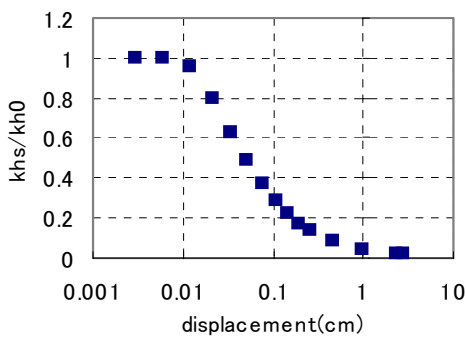


Fig. 6 Horizontal coefficient of subsoil reaction and pile displacement

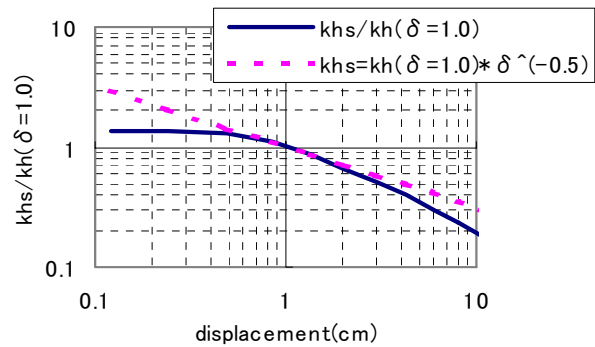


Fig. 7 Horizontal coefficient of subsoil reaction and pile displacement (displacement's scale is for prototype)

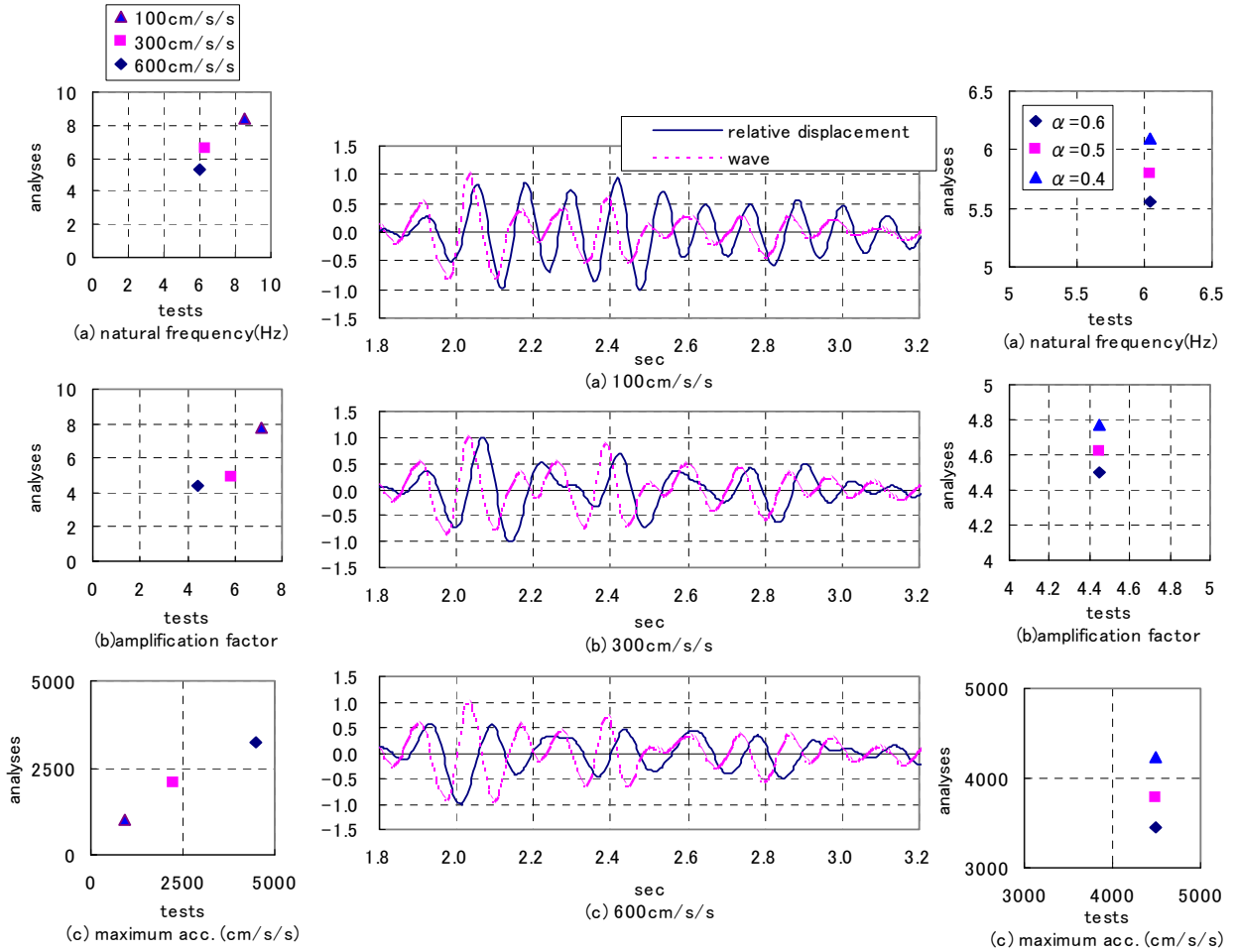


Fig. 8 Results of tests and analyses ($\alpha=0.7$)

Fig. 9 Relative displacement of base and stain of ground by wave propagation

Fig. 10 Results of tests and analyses (600cm/s/s)

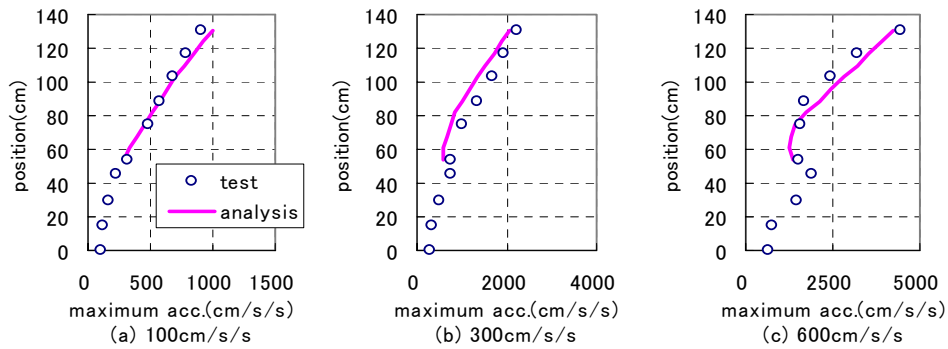


Fig. 11 Maximum acceleration's distribution

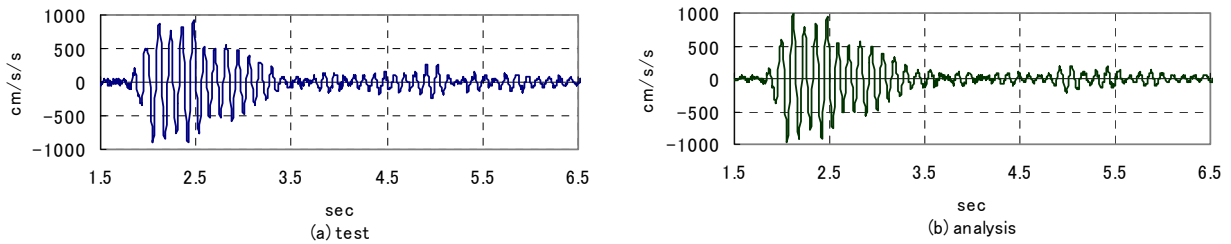


Fig. 12 Acceleration at the building (100cm/s/s)

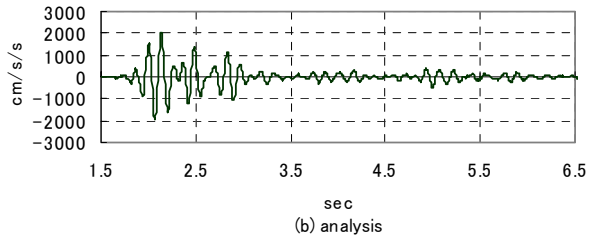
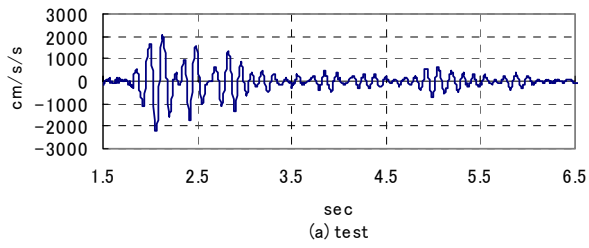


Fig. 13 Acceleration at the building (300cm/s/s)

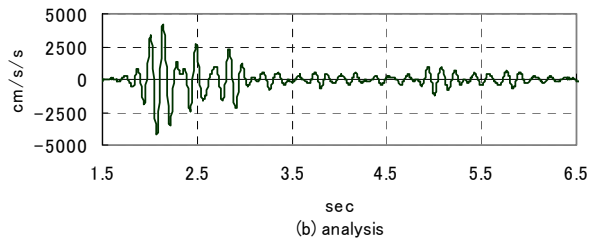
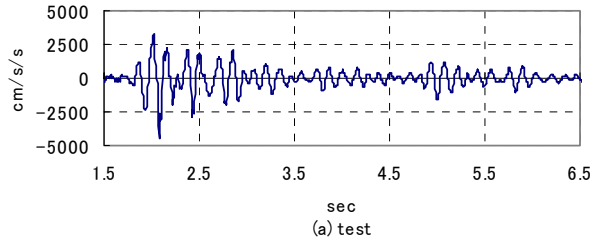


Fig. 14 Acceleration at the building (600cm/s/s)

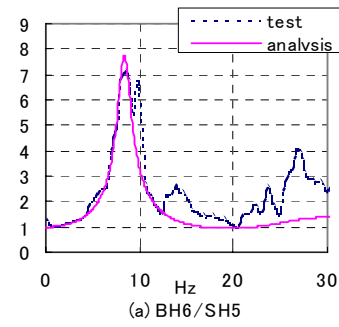


Fig. 15 Spectral ratios (100cm/s/s)

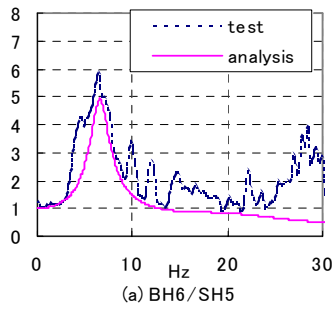


Fig. 16 Spectral ratios (300cm/s/s)

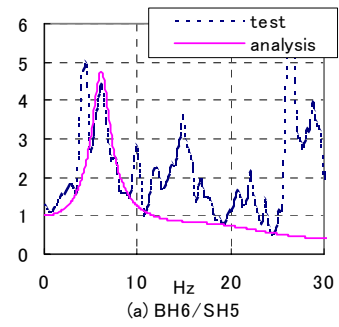


Fig. 17 Spectral ratios (600cm/s/s)

